

ДЕРЖАВНИЙ УНІВЕРСИТЕТ ІНФРАСТРУКТУРИ ТА ТЕХНОЛОГІЙ

FULL AHEAD

STUDENT'S BOOK

PART 2



Київ
2018

*Рекомендовано до друку кафедрою іноземних мов
за професійним спрямуванням Державного університету
інфраструктури та технологій
Протокол №11 від 28.06.2018*

Рецензенти:

Тирон О.М. – канд. психол. наук, доцент ДУІТ;
Дишлева С.М. – доцент кафедри іноземних мов НПУ
ім. М. Драгоманова.

Укладачі:

Корешкова С.П. – завідувач кафедри іноземних мов за
професійним спрямуванням Державного університету
інфраструктури та технологій, кандидат педагогічних наук, доцент

Діденко М.О. – старший викладач кафедри іноземних мов за
професійним спрямуванням Державного університету
інфраструктури та технологій

Підколесна Л.А. – старший викладач кафедри іноземних мов
за професійним спрямуванням Державного університету
інфраструктури та технологій

Сибірко О.С. – старший викладач кафедри іноземних мов за
професійним спрямуванням Державного університету
інфраструктури та технологій

Full Ahead (Повний вперед). Part 2 : навчально-
методичний посібник / С.П. Корешкова, М.О. Діденко,
Л.А. Підколесна, О. С. Сибірко. – Київ: Видавництво
Ліра-К, 2018. – 88 с.

ISBN 978-617-7605-71-0

Посібник “Full Ahead” створено для студентів першого курсу
факультету судноводіння Державного університету
інфраструктури та технологій. Мета посібника – сприяти
оволодінню англійською мовою як засобом професійного
спілкування у майбутній професійній діяльності. Посібник
розрахований на 90 аудиторних годин.

ISBN 978-617-7605-71-0

© Корешкова С.П., Діденко М.О.,
Підколесна Л.А. Сибірко О.С., 2018
© Видавництво Ліра-К, 2018

CONTENTS



Introduction		4
Unit 1	The Ship's Crew	5
Unit 2	The Vessel	13
Unit 3	Ship's Measurements	22
Unit 4	Types of Vessels	30
Unit 5	Safety Appliances	40
Unit 6	Emergency Situations	49
Unit 7	Personal Injuries	61
Unit 8	Maintenance of a Ship	72
References		87

INTRODUCTION

Speaking English (both General and Maritime) is an essential condition for all seafarers to get a job. The objective of the module is to develop communicative skills at General English and learn basics of Maritime English.

This Student's Book is designed for the first year students of Navigation Department. It consists of eight units: The Ship's Crew; The Vessel; Ship's Measurements; Types of Vessels; Safety Appliances, Emergency Situations; Personal Injuries; Maintenance of a Ship.

Each unit has the following parts:

Target language		This part provides the individual items of language that the students should learn.
Listening		Listening is a natural way to learn a language. There are a lot of recordings that are separate audio addition and after-listening activities that are designed for successful development of students' listening skills.
Reading		Reading is an essential part of language learning at every level because it supports learning in multiple ways. The students' purpose for reading is to obtain information about a subject they are studying. After-reading tasks are designed to develop reading comprehension.
Speaking		The goal of language is communication and the aim of speaking in a language context is to promote communicative efficiency. There are activities for group and pair work.
Self-assessment		Students assess their own performance. They learn to objectively reflect on and critically evaluate their own progress and identify gaps in their understanding and capabilities.

Approximate study time is 90 hours.

Unit 1. The Ship's Crew

Target language

complex	accommodation	purifier
skilled	upkeep	to perform duties
to operate	to allocate	AB
deck department	hull	OS
engine department	hold	chief steward
catering department	tackle	to oversee
to include	to repair	to supervise
boatswain	machinery	galley
maintenance	mooring equipment	wiper
loading	auxiliary	watchstander
discharging		



There is a lot of **complex** equipment on board modern ships so it is necessary to have **skilled** crews **to operate** the ships. The organization of a cargo ship crew is changing, but usually one can find three departments on such ships: the **deck department**, the **engine department** and the **catering department**.

The deck department **includes** navigators, a **boatswain** and sailors. We call navigators according to their **rank** on board ship: the Master (Captain), the Chief Officer (First Mate), the Second Officer (the Second Mate), the Third Officer (Third mate).

The Master of the ship is in command of the ship. He has the overall responsibility for the safe navigation of the ship, the safety and protection of the crew and passengers, the safe delivery of the cargo, and the efficient **maintenance** of the ship's equipment.

The Chief Officer is the Master's main assistant and the head of the Deck Department. He is responsible for **loading**, **discharging** and care of the cargo in port and at sea; the general maintenance of the deck and **accommodation** areas; and maintaining the navigation and safety equipment. He also assists the Master in the general administration on the ship. While at sea the Chief Officer normally keeps the 4-8 morning and evening navigation watch.

The Second Officer is often called the Navigating Officer and is responsible for the **upkeep** of navigational charts, navigational equipment and publications. He **plans** the voyage under the guidance of the Master and plots the course on the chart before the ship sails. At sea he keeps the navigational watch from 12-4 morning and night.

The Third Officer is responsible for the maintenance of the ship's safety equipment, including the fire-fighting and the life-saving equipment, under the guidance of the Chief Officer. He keeps the 8-12 mornings and evening navigational watch at sea.

All ships have a specialized training program and work schedule for hands-on job experience for the cadets. **The trainee or Deck Cadet** works under the guidance and command of the Chief Officer.

The Bosun, or Boatswain, is in charge of the Deck Ratings or crew. The Bosun takes orders from the Chief Officer for the maintenance work on deck and **allocates** work to the Deck Ratings. The Boatswain and sailors must keep the ship's **hull**, **holds** and **tackle** in good condition.

The Engine Department consists of the Chief Engineer, the Second, Third and Fourth Engineers, some motormen, fitter and two or three electricians. They keep watch in the engine room and must maintain and **repair** its equipment.

The Chief Engineer is the Head of the Engine Department. He has the overall responsibility for the maintenance and smooth operation of all **machinery** including the engine room and deck machinery, electrical and electronics systems, **mooring equipment**, deck pumps and cranes.

The Second Engineer is in charge of engine room machinery and personnel and assists the Chief Engineer in the maintenance of all machinery in the engine room and critical machinery on deck.

The Third Engineer is responsible for **auxiliary** engines and other electrical equipment.

The Fourth Engineer is responsible for auxiliary machinery such as **purifiers**, pumps and related equipment.

The Electrical Officer is responsible for the maintenance of electrical equipment onboard the ship, including radio, navigation and safety equipment.

The Fitter assists in the general maintenance of the Engine Room. The various repair jobs including **welding** and gas work are usually carried out by the Fitter.

Engine Ratings assist in general maintenance and cleaning and contribute to smooth operations in the Engine Room.

On cargo ships, **the Chief Cook** and **the Stewards** form part of a **Catering Department** team with the responsibility for food preparation and service and general accommodation area cleanliness. They work under the guidance of the Master. On Passenger Ships the Catering Department will have more personnel to meet the requirements of the passengers.

Only well-qualified sailors can **perform** their **duties** properly. That's why the crew's training is very important.

Task 1. Match the following jobs with the responsibilities they include:

1. The Master
2. The Chief Mate
3. The Second Mate
4. The Third Mate
5. The Chief Engineer
6. The Boatswain
7. The electricians
8. The fitter

is } responsible
for }
are }

- a. maintenance and smooth operation of all machinery
- b. keeping the ship's holds, deck and hull in good condition
- c. the safety of the ship, cargo and crew
- d. various repair jobs such as welding and gas work
- e. keeping radio, navigation and safety equipment in good condition
- f. navigational instruments and charts
- g. cargo
- h. safety equipment

Task 2. Answer the questions.

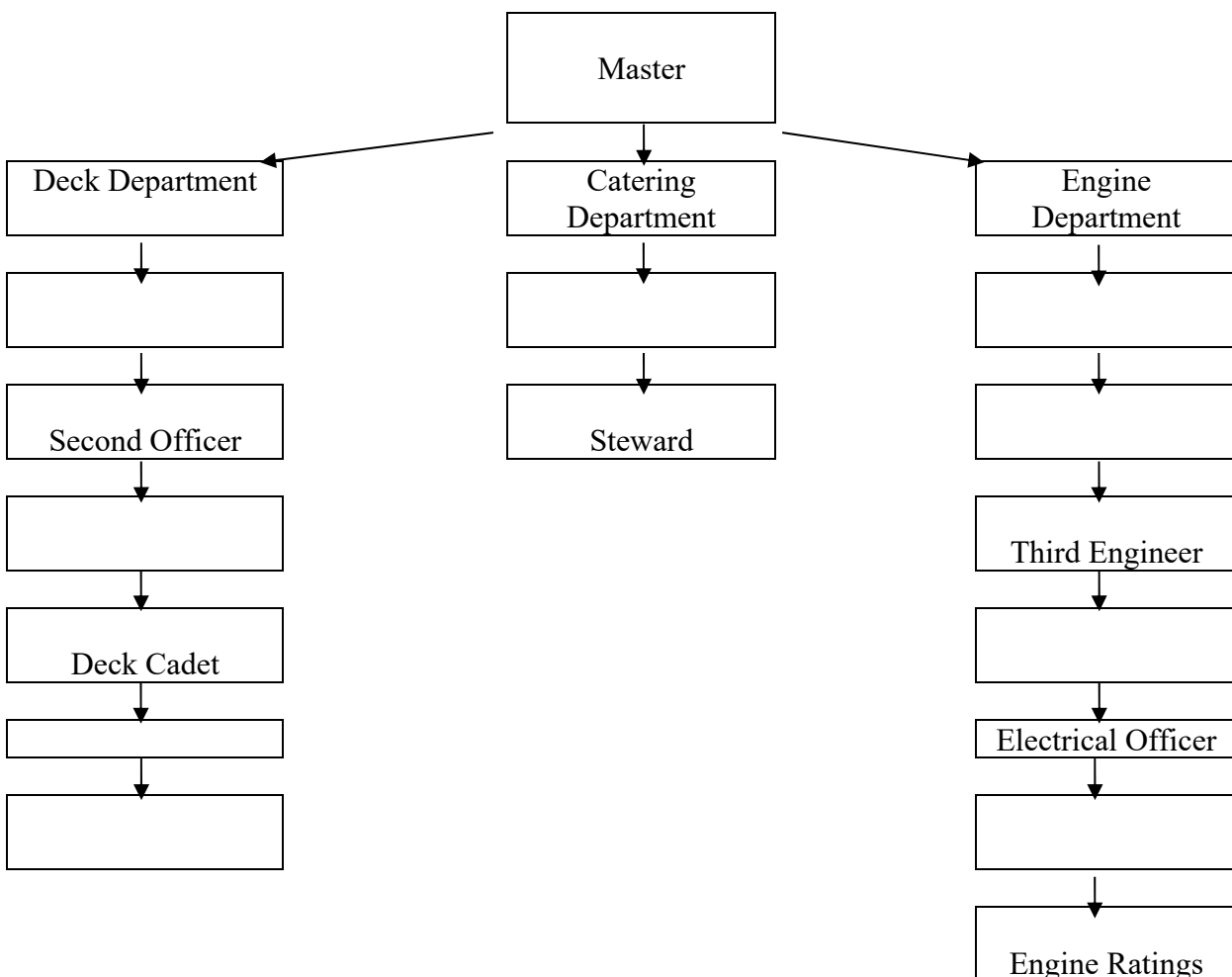
1. How many departments are there usually on board cargo ship?
2. What are they?
3. Who is the head of the Deck department?

4. Who is the head of the Engine department?
5. What is the Master responsible for?
6. What is the Chief Officer responsible for?
7. Who is responsible for safety equipment?
8. How many people does the Engine Department usually consist of?
9. Who is responsible for the work of sailors?
10. What are the Boatswain's duties?
11. What are the main duties of the sailors, Chief Engineer, fitter, etc.?

Task 3. Write the jobs in the correct position on the chart.

Bosun
Fourth Engineer
Chief Engineer
Second Engineer
Fitter

Chief Cook
Chief Officer
Deck Ratings
Third Officer



The crew

Job Posting

Task 4. Before you read the passage, talk about these questions.

1. What are some crew positions?
2. What are the responsibilities of an OS and an AB?



A UK-based shipping company is hiring for the following positions:

Chief Steward The chief steward will:

- oversee operations of the steward department
- supervise the chief cook, steward’s assistant, and the other personnel
- manage maintenance and operation of the galley
- oversee cleaning and maintenance of the officers’ quarters
- order supplies

Boatswain The boatswain will:

- oversee the operations of the deck crew
- oversee the ship’s maintenance and upkeep, except for galley and engine room.

A boatswain must be certified as an **AB** (Able Seaman)

OS (Ordinary Seaman) The OS will:

- work as a general deck hand under the supervision of the boatswain
- clean and maintain the ship
- stand in for the wiper if necessary
- assist ABs with their duties

The OS must be able to pass the **watchstander** exam after two months.

Task 5. Tell if the sentences are true or false.

1. The purpose of the posting is to list available positions for a ship’s crew.
2. Chief steward will be under supervision of the chief cook.
3. OS must be able to perform wiper’s duties.
4. Boatswain must have watchkeeping certificate.
5. The steward’s assistant orders supplies for the galley.
6. An AB is ranked above OS.

Task 6. Match the words (1-6) with the definitions (a-f).

1. steward department	a. the person who supervises meal preparation
2. steward’s assistant	b. the station responsible for meals and housekeeping
3. chief cook	c. a crew member who keeps watch
4. maintenance	d. the person who directs personnel in the steward department
5. watchstander	e. an entry-level position in the steward department
6. chief steward	f. the act or process of keeping something in working condition

Task 7. Read the sentence pairs. Choose which word best fits each blank.

1. boatswain / wiper

A. The _____ cleans and maintains the galley.

B. A _____ is in charge of the deck crew.

A. AB / OSA sailor with no experience starts as an _____ .

B. Becoming an _____ requires passing an exam and many hours at sea.